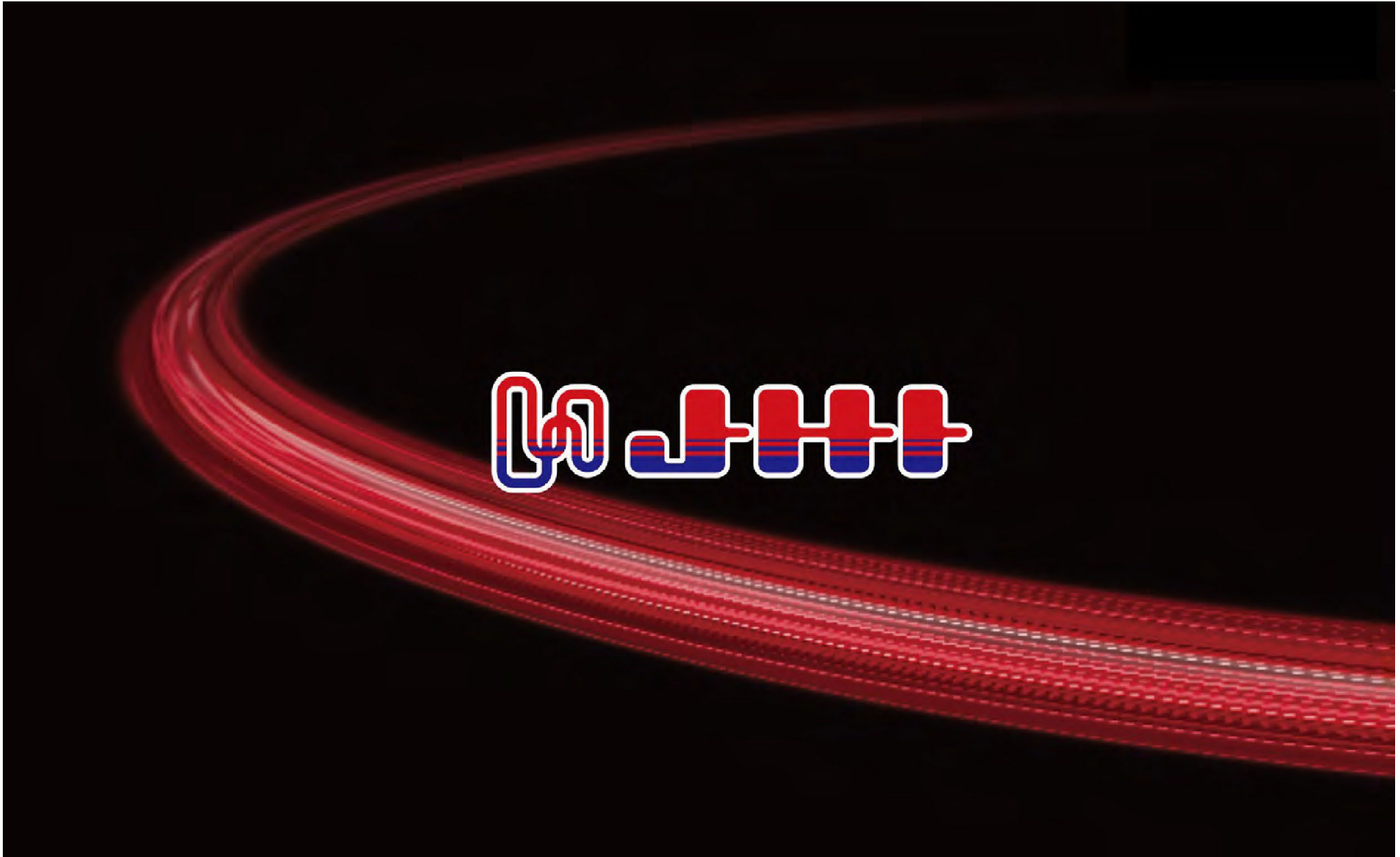
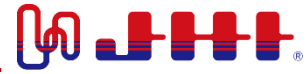
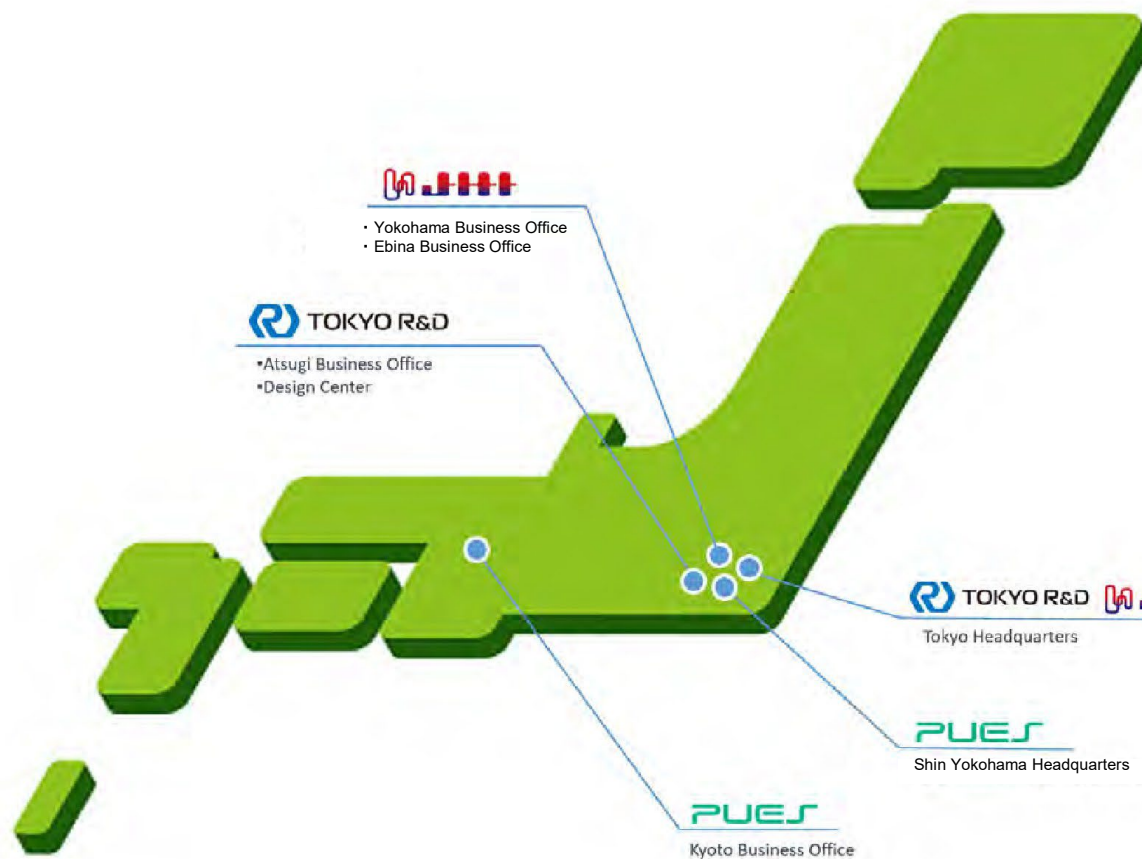


Introduce JHI Company





TOKYO R&D

- Headquarters: 2nd Floor, Fukuokaseimei Building, 2-2-2 Uchisaiwai-cho, Chiyoda-ku, Tokyo 100-0011, Japan.
- Atsugi Business Office: 1-25-12 Alkohigashi, Atsugi-shi, Kanagawa 243-0013, Japan.
- Design Center: 1-26-5 Aiko, Atsugi-shi, Kanagawa 243-0014, Japan.



- Headquarters: 2nd Floor, Fukuokaseimei Building, 2-2-2 Uchisaiwai-cho, Chiyoda-ku, Tokyo 100-0011, Japan.
- Yokohama Business Office: 4415-2 Shinyoshidacho, Kohoku-ku, Yokohama-shi, Kanagawa, Japan.
- Ebina Business Office: 5-14-5 Nakashinden, Ebina, Kanagawa, Japan



Tokyo Headquarters



- Shin yokohama Headquarters: 7th Floor, Shin-Yokohama TECH Building A, 3-9-18 Shin-Yokohama, Kohoku-ku, Yokohama-shi, Kanagawa, Japan.
- Kyoto Business Office: Room 106, KISTIC, 134 Nandojiminamimachi, Shimogyo-ku, Kyoto-shi, Kyoto, Japan.



Shin Yokohama Headquarters



Kyoto Business Office

Company Overview



4415-2 Shinyoshidacho, Kohoku-ku,
Yokohama-shi, Kanagawa 223-0056,
Japan

TEL : +81-(0) 45-595-0151

FAX : +81-(0) 45-595-0152

5-14-5 Nakashinden, Ebina-shi,
Kanagawa-ken, 243-0422, Japan
TEL : +81-(0) 46-200-7035
FAX : +81-(0) 46-200-7056



Trade Name	JHI Co., Ltd. (Formerly Japan Hydro System Industry Co., Ltd.)
Establishment	2015/7/1
Headquarters Location	2nd Floor, Fukuokaseimei Building, 2-2-2 Uchisaiwai-cho, Chiyoda-ku, Tokyo 100-0011, Japan
Capital	10,000,000yen
Number of Employees	61 employees (as of July 2025)
President	Izumi Miyashita
Executive Vice President	Kazuyuki Shiraiwa

Hose and Pipe

- Hoses and Piping systems: lightweight, high-pressure, durable, heat-resistant.
- Individual prototypes to small-scale production.



Composite Material Products

- Six autoclave units, large and small, with a flexible method.
- Prototyping to mass production with high strength and lightweight properties.



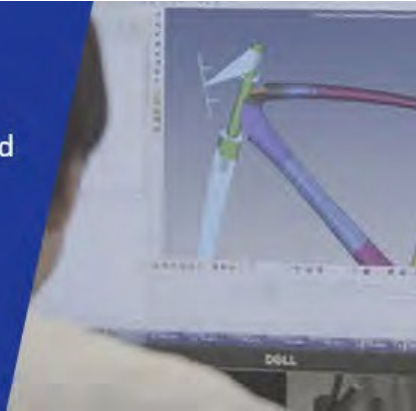
Machining Products

- Using advanced machining equipment for precise and efficient machining of metals, CFRP, and resin products.



01 Design and Analysis

- Apply 3D CAD for product, mold, and fixture design.
- Optimize layer parameters: orientation angles, fiber types, placement positions, stacking patterns, and layer counts.



02 Mold Manufacturing

- Use 3-axis and 5-axis machining for manufacturing.
- Selecting materials : metal, resin...based on design needs and production volume.
- Use 3D scanner for inspections.



03 Molding (Cure)

- Stacking and checking materials on the mold.
- Shaping with bend-stretch method.
- Directing fiber, bagging, choosing autoclave size, and curing the product.



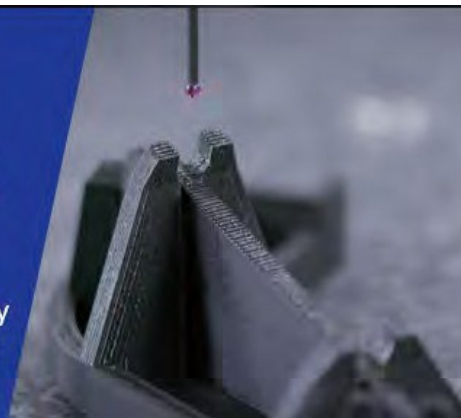
04 Machining

- Depending on the **size, quantity,** and required product **precision.** We process product shapes using a combination of 3-axis, 5-axis machining machines, and various special tools.



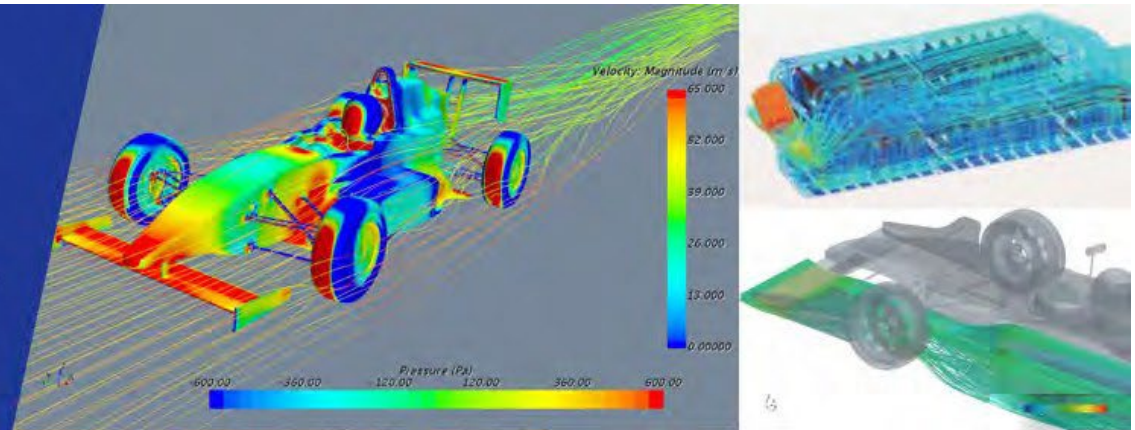
05 Inspection

- Including weight, plate thickness, trimming lines, hole diameter, and adhesive processes.
- With final approval from the quality control manager before delivery to customers.



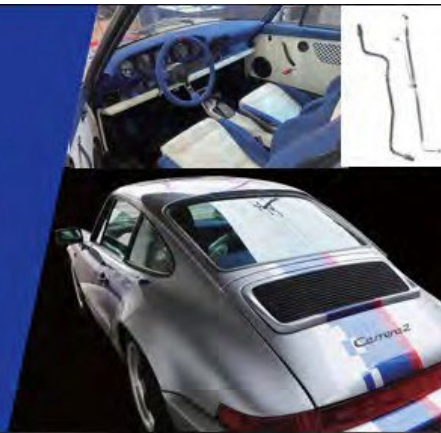
CAE Analysis

- Applying for design, analysis, and evaluation from prototyping to manufacturing.
- Providing complete assistance for various product development requirements.



Restore

- We assist customers with vintage and discontinued cars by manufacturing original parts and proposing unique designs.



AM (Additive Manufacturing)

- Solution focusing on design and analysis in the pre-process phase..
- Provide diverse proposals from design components to functional parts.

