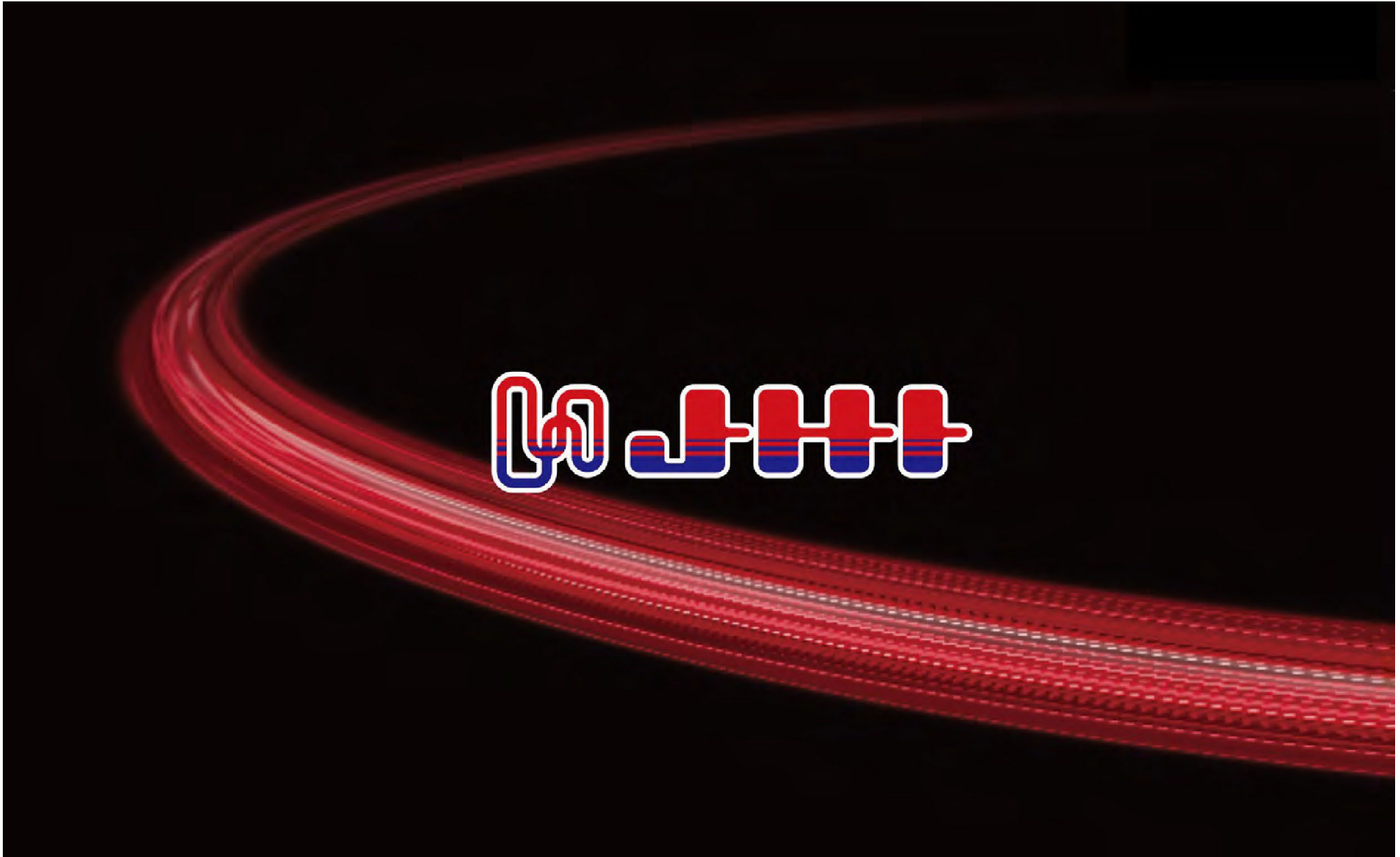
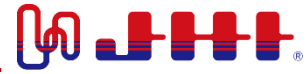
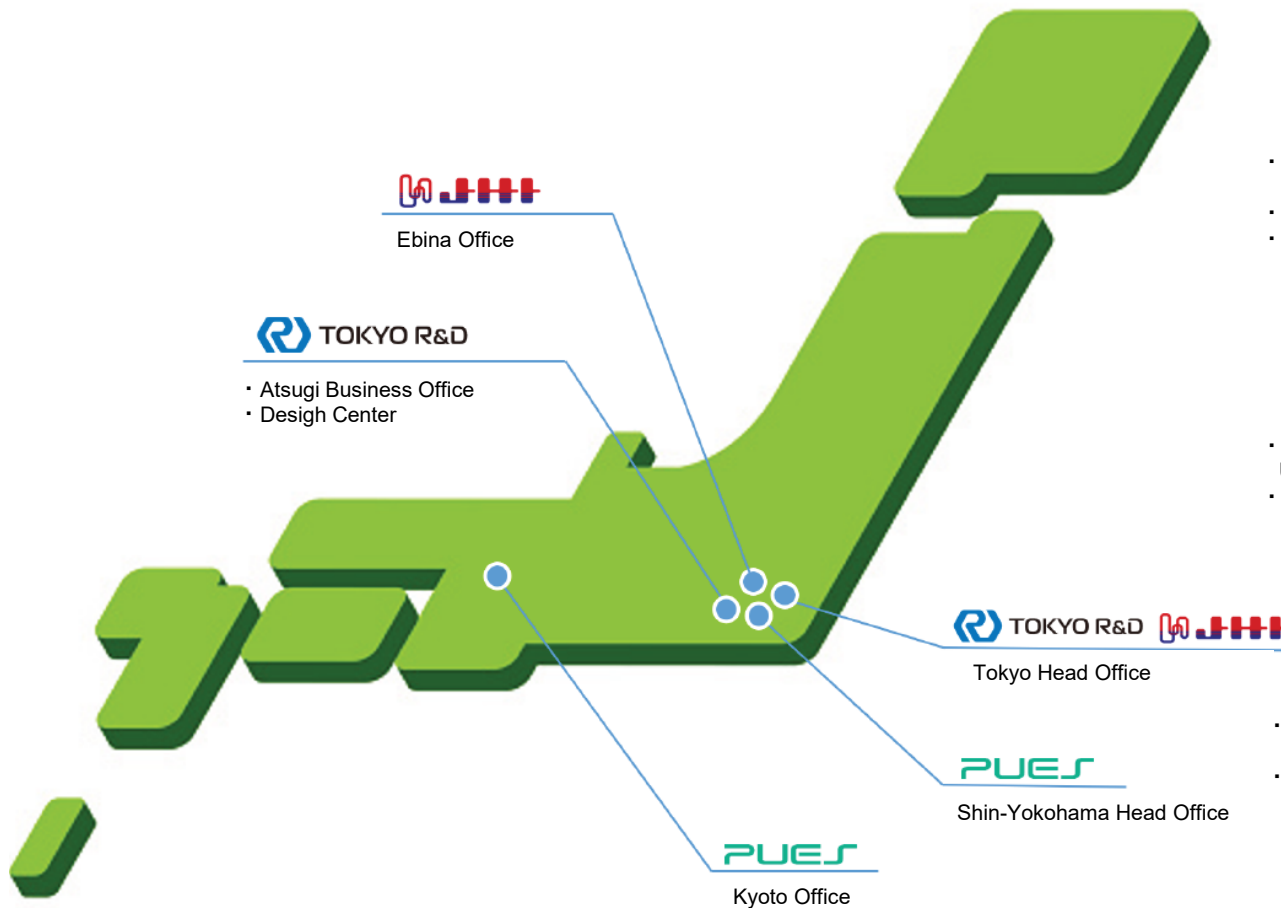


# Introduce JHI Company

---





- Head Office : 2nd Floor, Fukoku Seimei Building, 2F 2-2-2 Uchisaiwaicho, Chiyoda-ku Tokyo 100-001 Japan
- Atsugi Business Office : Aikōhigashi, Atsugi City, Kanagawa 243-0017, Japan
- Design Center : 1-26-5 Aiko, Atsugi City, Kanagawa 243-0035, Japan



- Head Office : 2nd Floor, Fukoku Seimei Building, 2F 2-2-2 Uchisaiwaicho, Chiyoda-ku Tokyo 100-001 Japan
- Ebina Office: 5-14-5 Shin-Nitta, Ebina City, Kanagawa 243-0422, Japan



- Head Office : Shin-Yokohama TECH Building A, 7th Floor 3-9-18 Shin-Yokohama, Kohoku-ku, Yokohama-shi, Kanagawa 222-0033, Japan
- Kyoto Office : 134 Chudoji Minamimachi, Shimogyo-ku, Kyoto City, 600-8813 PICK Office ASTEM Building, 10th Floor, Room 1006 Japan

## Company Overview



Ebina Business Office

5-14-5 Nakashinden, Ebina-shi,  
Kanagawa-ken, 243-0422, Japan  
TEL : +81-(0) 46-200-7035  
FAX : +81-(0) 46-200-7056



Trade Name	JHI Co., Ltd. (Formerly Japan Hydro System Industry Co., Ltd.)
Establishment	2015/7/1
Headquarters Location	2nd Floor, Fukuokaseimei Building, 2-2-2 Uchisaiwai-cho, Chiyoda-ku, Tokyo 100-0011, Japan
Capital	10,000,000 yen
Number of Employees	61 employees (as of July 2025)
President	Izumi Miyashita
Executive Vice President	Kazuyuki Shiraiwa



## Hose and Pipe

- Hoses and Piping systems: lightweight, high-pressure, durable, heat-resistant.
- Individual prototypes to small-scale production.



## Composite Material Products

- Six autoclave units, large and small, with a flexible method.
- Prototyping to mass production with high strength and lightweight properties.



## Machining Products

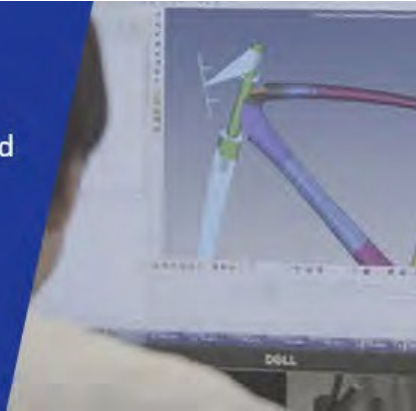
- Using advanced machining equipment for precise and efficient machining of metals, CFRP, and resin products.





## 01 Design and Analysis

- Apply 3D CAD for product, mold, and fixture design.
- Optimize layer parameters: orientation angles, fiber types, placement positions, stacking patterns, and layer counts.



## 02 Mold Manufacturing

- Use 3-axis and 5-axis machining for manufacturing.
- Selecting materials : metal, resin...based on design needs and production volume.
- Use 3D scanner for inspections.



## 03 Molding (Cure)

- Stacking and checking materials on the mold.
- Shaping with bend-stretch method.
- Directing fiber, bagging, choosing autoclave size, and curing the product.



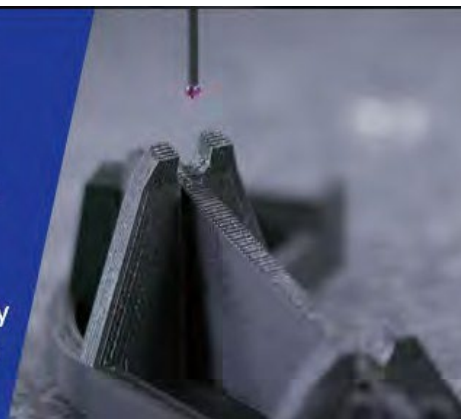
## 04 Machining

- Depending on the **size, quantity,** and required product **precision.** We process product shapes using a combination of 3-axis, 5-axis machining machines, and various special tools.



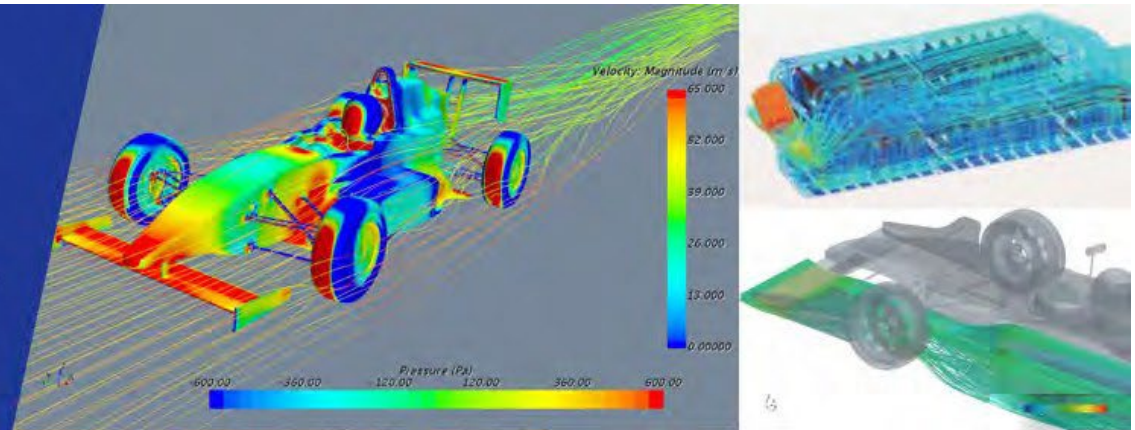
## 05 Inspection

- Including weight, plate thickness, trimming lines, hole diameter, and adhesive processes.
- With final approval from the quality control manager before delivery to customers.



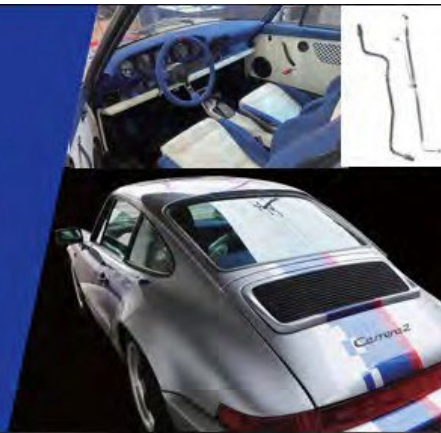
## CAE Analysis

- Applying for design, analysis, and evaluation from prototyping to manufacturing.
- Providing complete assistance for various product development requirements.



## Restore

- We assist customers with vintage and discontinued cars by manufacturing original parts and proposing unique designs.



## AM (Additive Manufacturing)

- Solution focusing on design and analysis in the pre-process phase..
- Provide diverse proposals from design components to functional parts.

